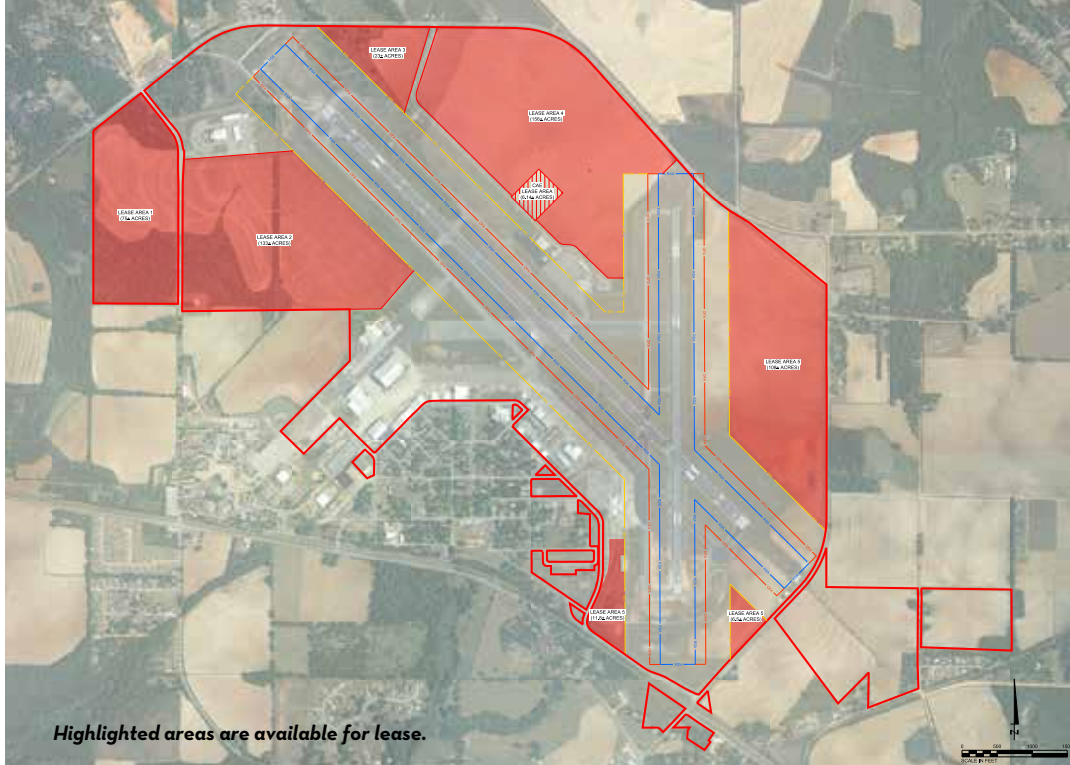


# DOTHAN REGIONAL AIRPORT (KDHN)

DOTHAN, ALABAMA

[www.flydothan.com](http://www.flydothan.com)



Highlighted areas are available for lease.



## AIRPORT TENANTS

AAA Cooper Hangar  
AAA Cab  
Avis Car Rental  
Aero-One Aviation (FBO)  
CAE USA  
Civil Air Patrol  
Clear Channel Airport Advertising  
Commercial Jet (MRO)  
DHN, LLC Hangar

Delta Airlines Connection  
Dinner Bell Cafe  
FAA Air Traffic Control Tower  
FAA Airways Facility Maintenance  
Hertz Car Rental  
National Car Rental  
Qualico Steel Hangar  
Republic Airport Parking  
Thompson Farms  
W.S. Hayes Boarding Pass Gift Shop



## FOR MORE INFORMATION:

**Matt Parker**

*President*

*Dothan Area Chamber of Commerce*

(334) 333-0965 (c) | (334) 792-5138 (o)

[mattpree@aol.com](mailto:mattpree@aol.com)

**Adam Hartzog**

*Deputy Airport Director*

*Dothan Regional Airport*

(334) 799-2469 (c) | (334) 983-8108 (o)

[ahartzog@flydothan.com](mailto:ahartzog@flydothan.com)

**Bryan Parker**

*Economic Development Representative*

*PowerSouth Energy*

(334) 343-6924 (c) | (334) 241-4440 (o)

[bryan.parker@powersouth.com](mailto:bryan.parker@powersouth.com)



## AIRPORT INFORMATION

### Airport Data:

- Based Aircraft
- Single Engine 36
- Multi Engine 45
- Jet 10

**Average Number of Annual Operations:** 90,000

**Latitude:** 031-19-16.821 N

**Longitude:** 083-26-58.664 W

**Elevation:** 401 feet

**Airport Beacon:** Clear/Green

**Air Traffic Control Tower:** 06:00 - 21:00 M-F and 07:00 - 20:00 S-S

**FAR 139 Certificated, Fire Index B (24 hours/day):** (334) 983-8103

### 24-hour Airport Police Department

#### Runway 14/32:

- |   |   |
|---|---|
| ▫ <b>Length:</b> 8,500 ft. / 2,590 m              | ▫ <b>Runway Markings:</b> PIR-G/<br>PIR-G |
| ▫ <b>Width:</b> 150 ft                            | ▫ <b>PAPI/VASI:</b> P2L/-                 |
| ▫ <b>Surface Type:</b> Asphalt                    | ▫ <b>Threshold Cross Ht:</b> 34/-         |
| ▫ <b>Surface Treatment:</b> Grooved               | ▫ <b>Visual Glide Angle:</b> 3.00/-       |
| ▫ <b>Gross Wt SW:</b> 75,000 lb.                  | ▫ <b>RVR-RVV:</b> -/T-N                   |
| ▫ <b>Gross Wt DW:</b> 105,000 lb.                 | ▫ <b>REIL:</b> Y/-                        |
| ▫ <b>Gross Wt DTW:</b> 190,000 lb.                | ▫ <b>Approach Lights:</b> -/MALSR         |
| ▫ <b>Lighting/Approach - Edge Intensity:</b> High |   |

#### Runway 18/36:

- |   |   |
|---|---|
| ▫ <b>Length:</b> 5,000 ft. / 1,524 m              | ▫ <b>Runway Markings:</b> NPI-G/<br>NPI-G |
| ▫ <b>Width:</b> 100 ft                            | ▫ <b>PAPI/VASI:</b> P2L/-                 |
| ▫ <b>Surface Type:</b> Asphalt                    | ▫ <b>Threshold Cross Ht:</b> 26/-         |
| ▫ <b>Surface Treatment:</b> Grooved               | ▫ <b>Visual Glide Angle:</b> 3.00/-       |
| ▫ <b>Gross Wt SW:</b> 75,000 lb.                  | ▫ <b>RVR-RVV:</b> Y/-                     |
| ▫ <b>Gross Wt DW:</b> 105,000 lb.                 | ▫ <b>REIL:</b> Y/-                        |
| ▫ <b>Gross Wt DTW:</b> 190,000 lb.                | ▫ <b>Approach Lights:</b> -/-             |
| ▫ <b>Lighting/Approach - Edge Intensity:</b> High |   |

### Hangars Available for Lease:

**16 acres of ramp at 12 inches to handle 767s**

#### Hangar 4

17 ft. high x 90 ft. wide  
13,400 sq. ft. (Office - 1,400 sq. ft.; Storage - 1,760 sq. ft.)

#### Hangar 5

20 ft. high with a 4x4 ft. tail door to make it 24 ft. x 120 ft. wide  
15,851 sq. ft. (Office - 1,764 sq. ft.; Storage - 276 sq. ft.)

#### Hangar 11

38 ft. high with a 4x4 ft. tail door to make it 42 ft. x 120 ft. wide  
34,200 sq. ft. (Office - 170 sq. ft.; Storage 432 sq. ft.)

## DOTHAN-HOUSTON COUNTY FOREIGN TRADE ZONE NUMBER 233

The Dothan Regional Airport is designated as a General Purpose Foreign Trade Zone area that allows qualifying companies to potentially benefit from some of the following:

- Elimination of Inverted Tarriffs
- No Duty of Value-Added
- Cash Flow Savings
- No Duties on Military or Government Contracts
- Reduction of Paperwork with U.S. Customs
- Scrap Duty Savings
- Expedited Customs Clearance utilizing the port of Entry (Panama City Customs Office).

The Dothan-Houston County FTZ Inc. administers the grantee for this program and utilizes the FTZ Corp. Inc. out of Mobile for consulting services. For more information on this program, contact Matt Parker, Dothan Area Chamber of Commerce President, at (334) 792-5138 or refer to [www.dothan.com](http://www.dothan.com).